



# The Middle Ages in Norman Ireland



**2.1 RECOGNISE** how a pattern of settlement and plantation influenced identity on the island of Ireland, referring to one example of a pattern of settlement, such as the growth of towns, and one plantation



**Paganism** dies out in Ireland, replaced completely by Christianity.



The believed foundation of **Christ Church Cathedral** by **Sitric Silkenbeard**.



The **Black Death** ravishes the city. Mass burials take place in **Blackpitts**.



795

830

1014

1028

1171

1348

1494

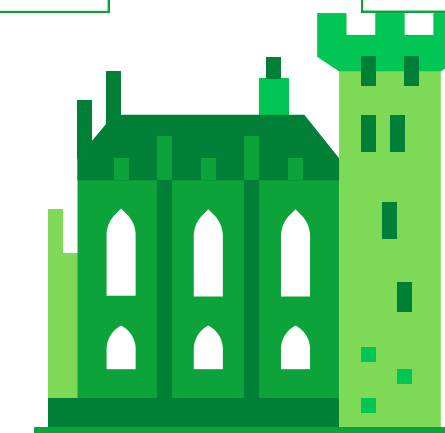
The **Arrival of the Vikings** in Ireland marked the beginning of the raids..



**Brian Boru** defeats **Viking forces** at the **Battle of Clontarf**.



**Henry II of England** arrives in Ireland, declaring himself **Lord of Ireland**.



**Ponying's' Law**  
Irish Parliament cannot pass law without consent of English Parliament.